



# HORIZONTAL TEMPERING GLASS

TEMPERED GLASS   DOUBLE GLAZED UNITS   LAMINATED GLASS   BULLET PROOF GLASS   DECORATIVE GLASS   MIRRORS   STEEL & STAINLESS STEEL STRUCTURES   CURTAIN GLASS

GLASS IS WHAT WE DO BEST

01

OUR STORY 04

- Our journey
- Our workforce
- Our qualifications
- Our ethical integrity

02

QUALITY POLICY & CERTIFICATES 06

- ISO Quality Management 9001:2015
- Saint Gobain Glass
- Guardian glass
- AGC glass
- Guardian glass
- Glastroesch Glass
- BANC NATIONAL D'EPREUVE Bullet proof certification

03

EQUIPMENT 08

- Preprocessing lines
- Processing lines

04

PRODUCTS 10

- Tempered glass
- Laminated glass
- Double glazed units
- Bullet proof glass
- Steel and stainless steel structures
- Curtain glass systems

05

PROJECTS 13

- MEA Training Center Beirut Lebanon
- MEA Green Building Beirut Lebanon
- Sheraton Four Points Verdun Lebanon
- Parallel Towers Sin el fil Lebanon
- Regent Park Tower Sin El Fil Lebanon
- Le Grey Hotel Beirut Lebanon
- ABC Verdun Verdun Lebanon
- District S Buildings Beirut Lebanon
- Al Sadat Tower Beirut Lebanon
- and more

06

GLOBAL PROJECTS 20

- Del Mar Towers Limassol Aiya Napa Marina
- CIVE Head Quarters Texas USA
- Kempinski Hotel & Resort Dead Sea Jordan
- Rotana Hotel Erbil
- Shopping Mall Kinshasa DRC
- OOREDOO Head Quarters Algeria
- BEAC OYO Congo
- and more



# 01

## OUR STORY 04

Our journey

Our workforce

Our qualifications

Our ethical integrity



## our story

Our journey began almost three decades ago with the small dream of manufacturing the best architectural glass in Lebanon. Today, we are leaders in the country and the MENA region, providing state-of-the-art glass solutions for all types of architectural and decorative projects with a diverse portfolio of executed jobs in Lebanon and abroad.

Since its establishment, Horizontal Tempering Glass' workforce has grown to more than 140 employees operating on a 5500sqm facility located in the suburbs of Beirut.

Looking forward to the future, we will maintain our commitment to quality and innovation while aiming for excellence.

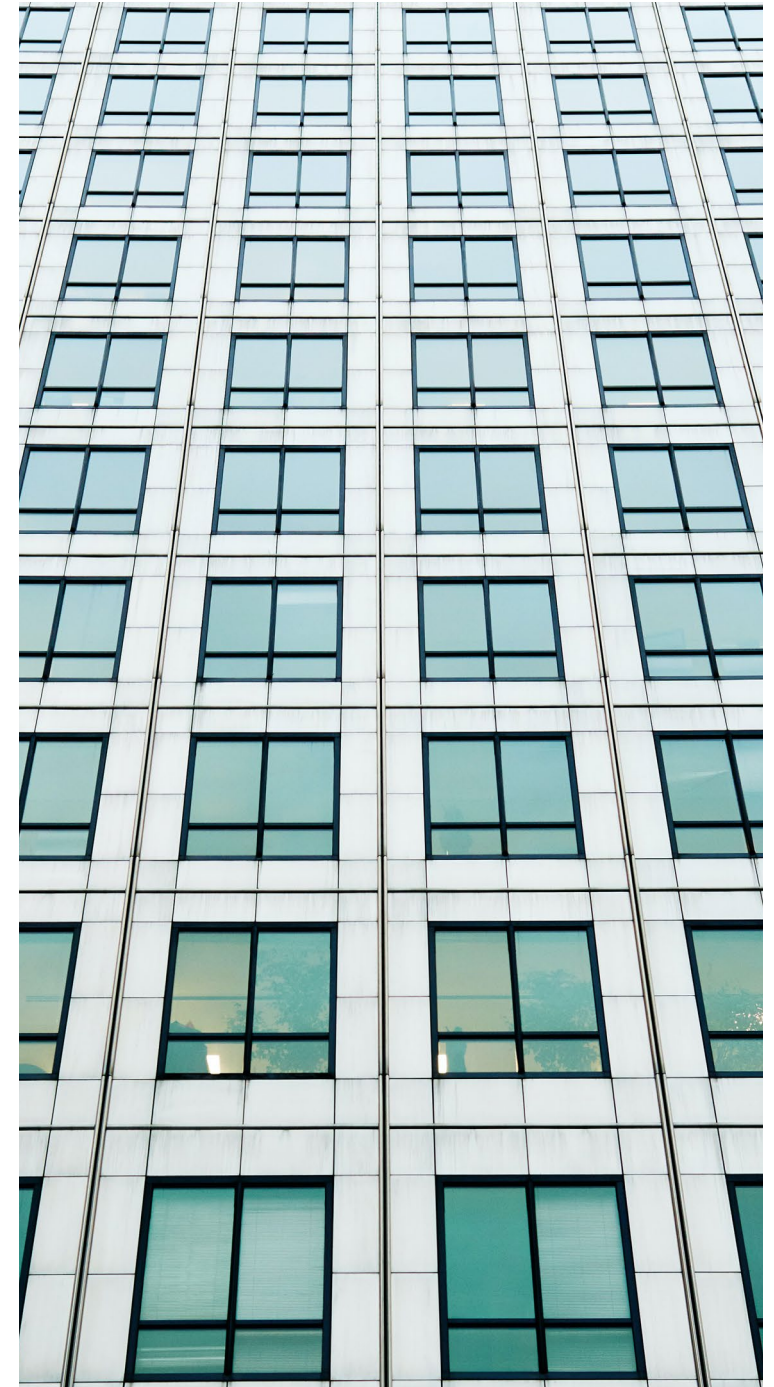


## your glass facade to the world

Over the years, we have invested in human talent alongside top-of-the-line equipment and machineries in order to meet the constant evolution of building requirements. We have also worked on our qualifications and hence got certified from major world glass producers like Saint Gobain, AGC and Guardian Glass in addition to having our glass CE-marked according to EN-1279 and EN12150- allowing us to sell our products in different markets all over the world including Europe and the United States.

Being part of a holding of companies including A. Hajjar for Trading (a company that imports/ exports all types of annealed raw material glass) and ABM (specialized in sealants, production tools and hardware trading), we are increasingly growing foothold in the market as we can independently and continuously cover our supply chain. We strive for precise and on time delivery while constantly improving our production quality. Our customers are satisfied by both our services and our creative solutions that are always tailored to their specific requirements.

Most importantly, we do it all while maintaining the highest standards of safety, professional and ethical integrity.





# 02

## QUALITY 06 POLICY & CERTIFICATES

ISO Quality  
Management  
9001:2015

Saint Gobain Glass

Guardian glass

AGC glass

Guardian glass

Glastroesch Glass

BANC NATIONAL  
D'EPREUVE Bullet  
proof certification



## quality policy

Our policy at HTG is to provide our customers with products and services that satisfy their needs and expectations in terms of quality, service and price. We deliver in conformance with the company's quality specifications or as laid down by the customer.

Our target is to deliver products and services with zero defects and matching the quality standards set by our management.

HTG commits itself to continuous improvement, further expanding and increasing its competitive leadership in quality, cost and services in joint partnership with interested parties such as shareholders, employees, providers and customers.

The company's quality system is in accordance with the requirements of ISO 9001:2015 and is considered to be the minimum standard set by the company to ensure that the requirements of our customers are adhered to in all respects.

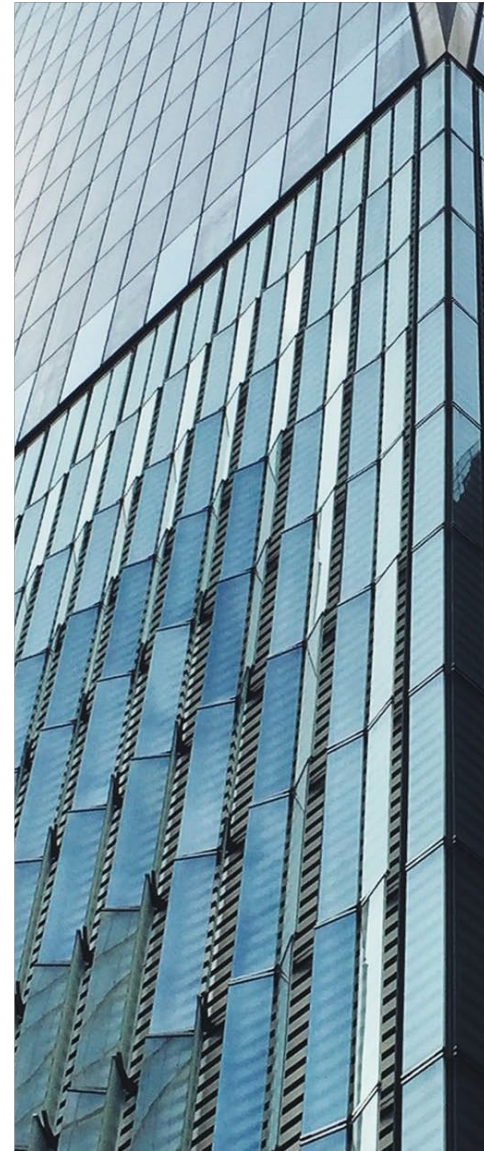
The quality procedures are mandatory and no deviations or alternatives are permitted. All the company's employees, whether directly involved with products or services quality or not, must comply with them and work in accordance with our policies.

The Quality Department has been given the responsibility and authority to ensure that this policy is established, enacted correctly, implemented and that the quality system is periodically reviewed to improve its suitability and effectiveness.



It is our belief that a quality conscious company will build on its own reputation: therefore, a program of controlled quality is operated from day one after receiving quality sensitive materials, throughout production and up to the final phase of dispatching the goods to our customers.

Every team member is made aware, and through continuous extensive training, of the need to improve performance and workmanship wherever and whenever possible in order to produce and provide the best quality products and services. This is reflected in job descriptions and operating procedures in addition to the support and encouragement given by immediate superiors.



## certificates

Certified Processor for Saint Gobain Glass

Certified Processor for AGC Glass

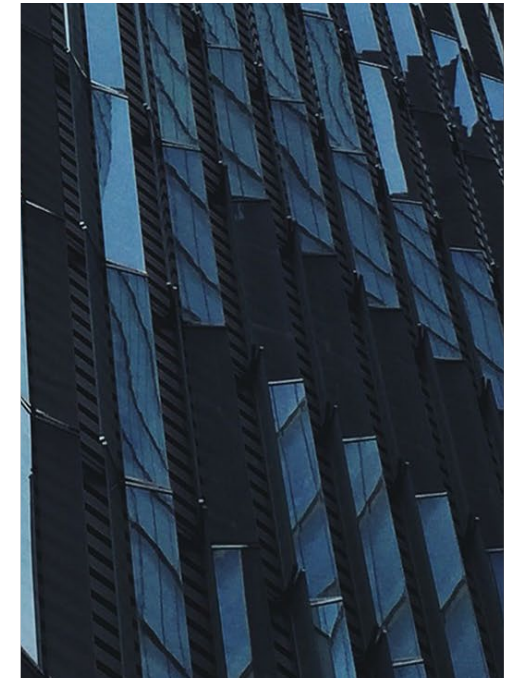
Certified Processor for Guardian Glass

Certified Processor for Glastroesch Glass

Certified Laminator for PVB & SGP Trosifol products

Certified Bullet Proof Glass Laminators

ISO 9001:2015 Quality Management







03

EQUIPMENT 08

Preprocessing lines

Processing lines



## preprocessing lines

### **BAVELLONI REV152 CUTTING TABLE**

Operational Dimensions: 3700mm x 2600mm

### **LISEC CUTTING TABLE**

Operational Dimensions: 4500mm x 3210mm

### **VR14 11 BAVELLONI EDGING MACHINE**

### **GEMY 9 BAVELLONI EDGING MACHINE**

### **FORVET R125**

Fully Automated Drilling and milling horizontal CNC

### **TOP DRILL**

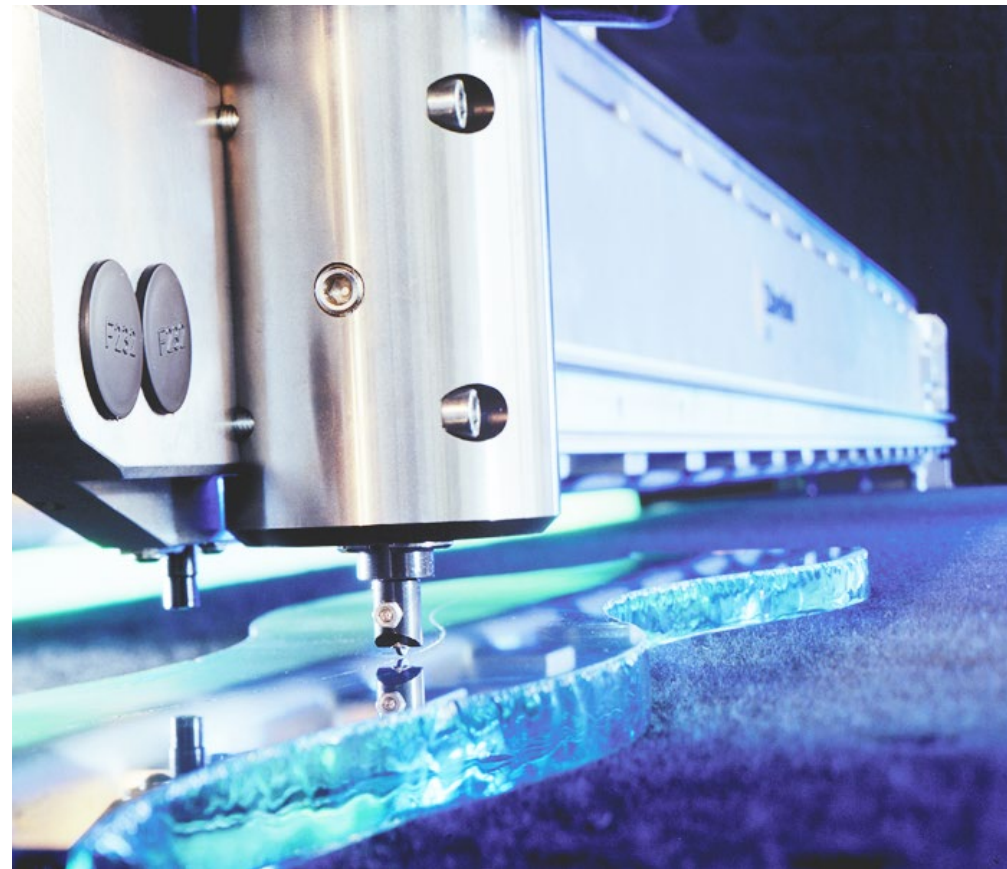
Fully Automated Vertical Drilling CNC

### **INTERMAC**

Fully Automated Drilling, milling and edging CNC

### **DYNAMIKI SANDBLASTING MACHINE**

Operational Dimensions 4500mm x 2700mm



## processing lines

### **TAMGLASS HTF PRO E Double Convection Furnace**

Operational Dimensions: 4500mm x 2440mm

### **EKANG Semi Automated DOUBLE GLAZING LINE**

Operational Dimensions: 4500mm x 2500mm

### **TAMGLASS AK 3000 PVB LAMINATION LINE with AUTOCLAVE**

Operational Dimensions: 4500mm x 2500mm





# 04

---

## PRODUCTS 10

Tempered glass

Laminated glass

Double glazed  
units

Bullet proof glass

Steel and stainless  
steel structures

Curtain glass  
systems



## tempered glass

Surpasses annealed glass in safety and functioning. Valued for its mechanical and thermal strength and when broken is fragmented into small pieces causing less damage and injuries

Application: Shop fronts, Shower enclosures, office partitions...



## laminated glass

Has the capability to incorporate various options of glass compositions: tempered glass, clear glass, colored or coated glass.. Also adds value in both safety and acoustical performances

Application: Balustrades, Skylights, Canopies, shopfronts...

## double glazed units

Two panes of glass enclosing a hermitically sealed airspace. Used for providing high sound and thermal insulation while providing better solutions when high performance glass is used in the combinations.

Application: Curtain walls, building facades, windows..





## bullet-proof

Multilayers of glass laminated with PVB having a total thickness ranging from 18mm upwards depending on the type of bullet/weapon to resist.



## steel and stainless steel structures

We provide solutions for all sorts of structures that are to be used for several purposes such as spider facades, bullet proof facades, canopies, skylights... Such structures are all prepared in-house under the supervision of our engineers and the installation of the well trained technical teams.

## curtain glass systems





# 05

## PROJECTS 13

MEA Training Center  
Beirut Lebanon

MEA Green Building  
Beirut Lebanon

Sheraton Four Points  
Verdun Lebanon

Parallel Towers  
Sin el fil Lebanon

Regent Park Tower  
Sin El Fil Lebanon

Le Grey Hotel  
Beirut Lebanon

ABC Verdun  
Verdun Lebanon

District S Buildings  
Beirut Lebanon

Al Sadat Tower  
Beirut Lebanon

and more





### MIDDLE EAST TRAINING CENTER (MEA)

Beirut, Lebanon

Scope of work:

6000 Sqm of Guardian DS50 High Performance glass double glazed units

Aluminum Contractor: SOUBRA METALS



### MIDDLE EAST GREEN BUILDING (MEA)

Beirut, Lebanon

Scope of work:

6800 Sqm of Guardian DS50 High Performance glass double glazed units

Aluminum Contractor: SOUBRA METALS





### AL SADAT TOWER

Beirut, Lebanon

Scope of work:

5000 Sqm of Saint Gobain REFLECTASOL Solar control double glazed units

Aluminum Contractor: AG BUILDINGS



### BAHRI GARDENS

Beirut, Lebanon

Scope of work:

2000 Sqm of Tempered Laminated glass balustrades

Stainless fixation accessories and handrails

Subcontractor: HORIZONTAL TEMPERING GLASS





### VERDUN GARDENS

Beirut, Lebanon

Scope of work:

4500 Sqm of Tempered Laminated glass balustrades

Aluminum Contractor: ALUMCO

Shower cabinets, mirrors and back painted wall cladding in +150 rooms

Subcontractor: HORIZONTAL TEMPERING GLASS



### DISTRICT S BUILDING

Beirut, Lebanon

Scope of work:

7000 Sqm of Saint Gobain PLANITHERM XN Thermal control double glazed units

2500 Sqm of laminated glass for shopfronts

Aluminum Contractors: ACTE ALUMINUM - ALGECO





### BOULEVARD HEIGHTS

Sin El Fil, Lebanon

Scope of work:

- 5500 Sqm of Saint Gobain SKN 165 High performance glass double glazed units
- Aluminum Contractor: BIFEM PARALU



### FFA HEAD QUARTERS

Beirut, Lebanon

Scope of work:

- Glass partitions, decorative glass cladding and automated doors
- Subcontractor: HORIZONTAL TEMPERING GLASS



### BEIRUT DIGITAL DISTRICT

Beirut, Lebanon

Scope of work:

- 2500 Sqm of GUARDIAN N40 High performance double glazed units
- Aluminum Contractor: ALGECO



### HYUNDAI SHOWROOM

Zalka, Lebanon

Scope of work:

- 500 Sqm of Jumbo Sized Laminated Glass
- Aluminum Contractor: STAL



### MIKE SPORT

Zalka, Lebanon

Scope of work:

- Tempered glass spider facades
- Steel structure
- Subcontractor: HORIZONTAL TEMPERING GLASS



### LE GRAY HOTEL

Beirut, Lebanon

Scope of work:

- 1500 Sqm of Saint Gobain PLANITHERM thermal control glass double glazed units
- Internal Shower Cabinets (+120 rooms), balustrades, panoramic elevator & glass bridges
- Subcontractor: HORIZONTAL TEMPERING GLASS





### FOUR POINTS BY SHERATON

Beirut, Lebanon

Scope of work:

- Decorative glass, glass stairs, balustrades and shower cabinets (+135 Rooms)
- Subcontractor: HORIZONTAL TEMPERING GLASS



### PARALLEL TOWERS

Beirut, Lebanon

Scope of work:

- 5000 Sqm of Saint Gobain ST COOL-LITE 120 Solar control double glazed units
- 1000 Sqm of Tempered glass for shopfronts
- Aluminum Contractor: BIFEM PARALU



### PALLADIUM BUILDING

Beirut, Lebanon

Scope of work:

- 4200 Sqm of PILKINGTON K Thermal control double glazed units
- 1500 Sqm of Tempered Laminated glass for Panoramic Lifts, glass balustrades and glass bridges
- Aluminum Contractor: STAL



### REGENT PARK TOWER

Sin El Fil, Lebanon

Scope of work:

- 5000 Sqm of Saint Gobain SKN 165 High performance double glazed units-
- Aluminum Contractor: BIFEM PARALU



### BANK OF BEIRUT

Beirut, Lebanon

Scope of work:

- Bullet proof glass facades, internal partitions and steel structures
- Subcontractor: HORIZONTAL TEMPERING GLASS



### ABC VERDUN

Beirut, Lebanon

Scope of work:

- 4500 sqm of Saint Gobain SKN 165 high performance double glazed units, tempered laminated glass balustrades and canopies.
- Aluminum Contractor: ALGECO
- Glass for shopfronts
- Subcontractor: HORIZONTAL TEMPERING GLASS





### LE MALL SAIDA

Saida, Lebanon

Scope of work:

- Glass facades for shopfronts with tempered laminated balustrades and glass bridges
- Subcontractor: HORIZONTAL TEMPERING GLASS



### BEIRUT TOWER

Beirut, Lebanon

Scope of work:

- Decorative glass, glass doors, shower cabinets and mirrors (90+ Apartments)
- Subcontractor: HORIZONTAL TEMPERING GLASS



### ABC ACHRAFIEH

Beirut, Lebanon

Scope of work:

- Glass facades for shopfronts and tempered laminated balustrades
- Subcontractor: HORIZONTAL TEMPERING GLASS

## commercial

Bank of Beirut All Branches  
Fransabank branches and Headquarters  
Bank Audi Headquarters  
I Design Center  
Zouhair Mrad Building  
O & C Market  
Maisons et Parquets  
Beirut Entertainment Center  
Beirut Souks

## high rises & residential buildings

Saifi 477 Building  
Tilal Beirut  
Quasar  
Portside  
Skyline  
The Netherlands Tower  
Sayfco Tower  
Hitachi Towers  
Verdun Gardens  
Le Patio  
Urban Dreams  
Doha Hills  
Bay Tower  
One Oak Residence  
Tilal El Fanar

## hotels

Al Bustan Spa & Resort  
Habtour Hotel  
Four Seasons Hotel

## schools & universities

AUB (New Buildings)  
Evangelical School Rabieh (New Campus)  
Lycee Francais Beirut  
CNAM University (New Campus)  
AUL (New Campus)

## hospitals

Gitaoui Hospital  
St. Georges Hospital  
AUH (New Building)  
FMC Zgharta  
Hotel Dieu





# 06

## GLOBAL PROJECTS 20

Del Mar Towers  
Limassol Aiya Napa  
Marina

CIVE Head Quarters  
Texas USA

Kempinski Hotel &  
Resort  
Dead Sea Jordan

Rotana Hotel  
Erbil

Shopping Mall  
Kinshasa DRC

OOREDOO  
Head Quarters  
Algeria

BEAC OYO  
Congo

and more



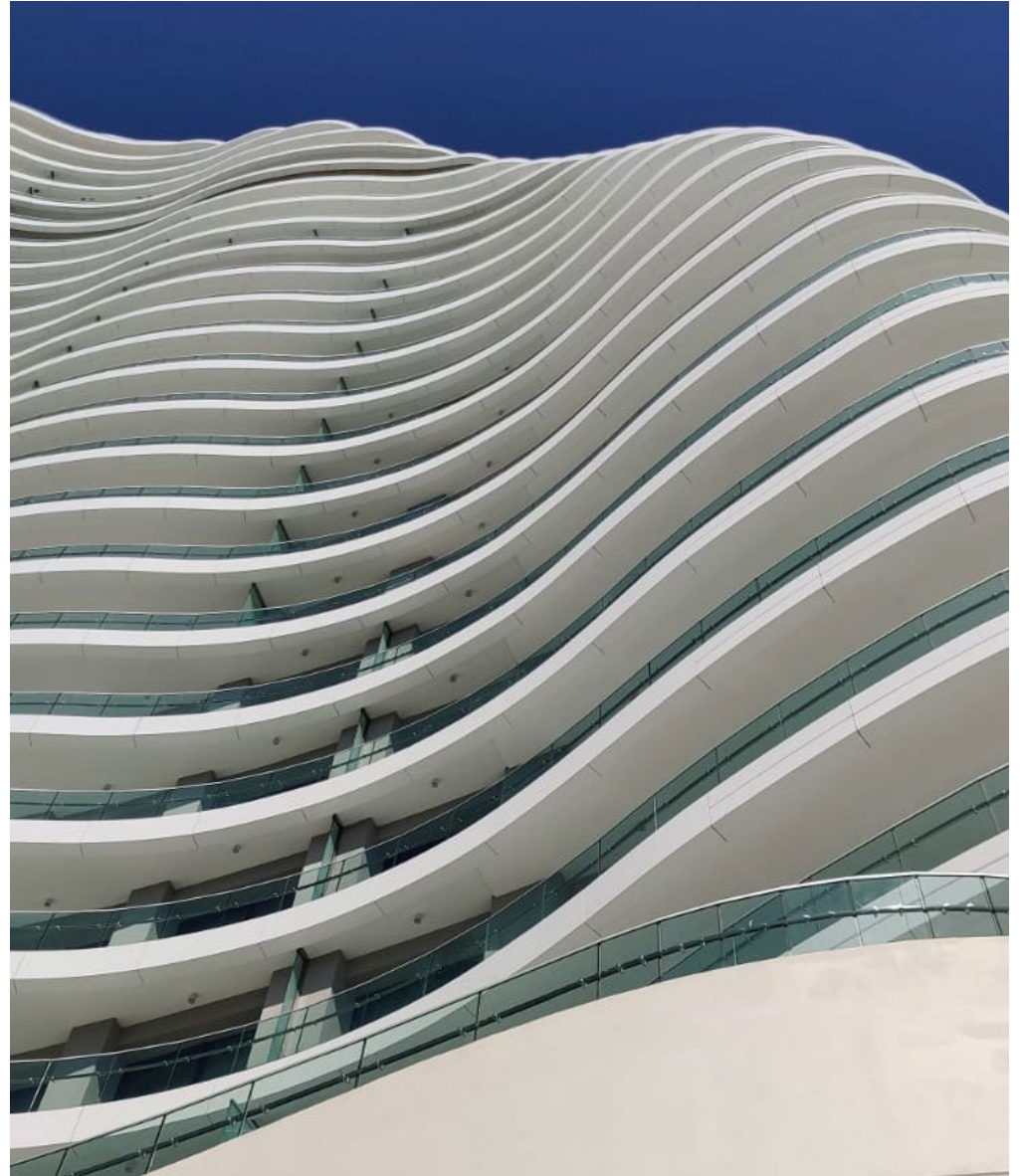


### DEL MAR TOWERS

Limassol, Aiya Napa Marina

Scope of work:

- 10,000 Sqm of Saint Gobain SKN 176 High Performance double glazed units
- 7500 Sqm of Sentry PVB Laminated glass balustrades
- Aluminum Contractor: ALUSTEEL







### AIYA NAPA MARINA

Limassol, Cyprus

Scope of work:

- 9,000 Sqm of Saint Gobain SKN 176 High Performance double glazed units
- 5500 Sqm of Sentry PVB Laminated glass balustrades
- Aluminum Contractor: ALUSTEEL



### BEAC CONGO

Kinshasa, DRC

Scope of work:

- 8800 Sqm of Saint Gobain Ceramic printed Reflectasol glass with Planitherm double glazed units
- 1200 Sqm of double glazed units with BR6 Bullet Proof inner panes
- Contractor: GROUP VINCI





### LE PATIO

Algiers, Algeria

Scope of work:

- 5400 Sqm of Double Glazed units
- Aluminum Contractor: D8 METALS



### KEMPINSKI RESORT

Dead Sea, Jordan

Scope of work:

- Internal balustrades, automated doors, SPA glass partitions, shower cabinets and mirrors (+285 Rooms)
- Subcontractor: HORIZONTAL TEMPERING GLASS



### CIVE HEADQUARTERS

Texas, USA

Scope of work:

- 1200 Sqm of Saint Gobain ST COOLITE 120 Solar control double glazed units
- Aluminum Contractor: CIVE



### ROTANA HOTEL

Erbil, Iraq

Scope of work:

- Internal balustrades, glass partitions, skylights, shower cabinets, mirrors and automated doors (+200 Rooms)
- Subcontractor: HORIZONTAL TEMPERING GLASS

## commercial

Electromax Showroom, Angola  
 LG Showroom, Angola  
 Sakura Restaurant Crown Plaza, Jeddah  
 SODEC Building, Ouagadougou  
 VI Squash Courts, Lagos Nigeria  
 Shopping Mall Kinshasa, DRC  
 CIVE HQ, Texas USA  
 BEAC, DR Congo

## residential

ISHTAR Villas, Amman Jordan  
 Global Student Housing Texas USA  
 Le Patio, Algeria

## high rises

Aiya Napa Marina, Cyprus  
 Del Mar Towers, Limassol Cyprus  
 Ooredoo Head Quarters, Algeria  
 Fransabank Head Quarters, Algeria

## hotels

Al SHAAB Beach Resort, Kuwait  
 Four Seasons Hotel, Damascus  
 Rotana Hotel, Erbil Iraq  
 Kempinski Hotel, Dead Sea Jordan

## airport

Al Mourjan Business Lounge, Doha  
 Doha airport Duty Free